

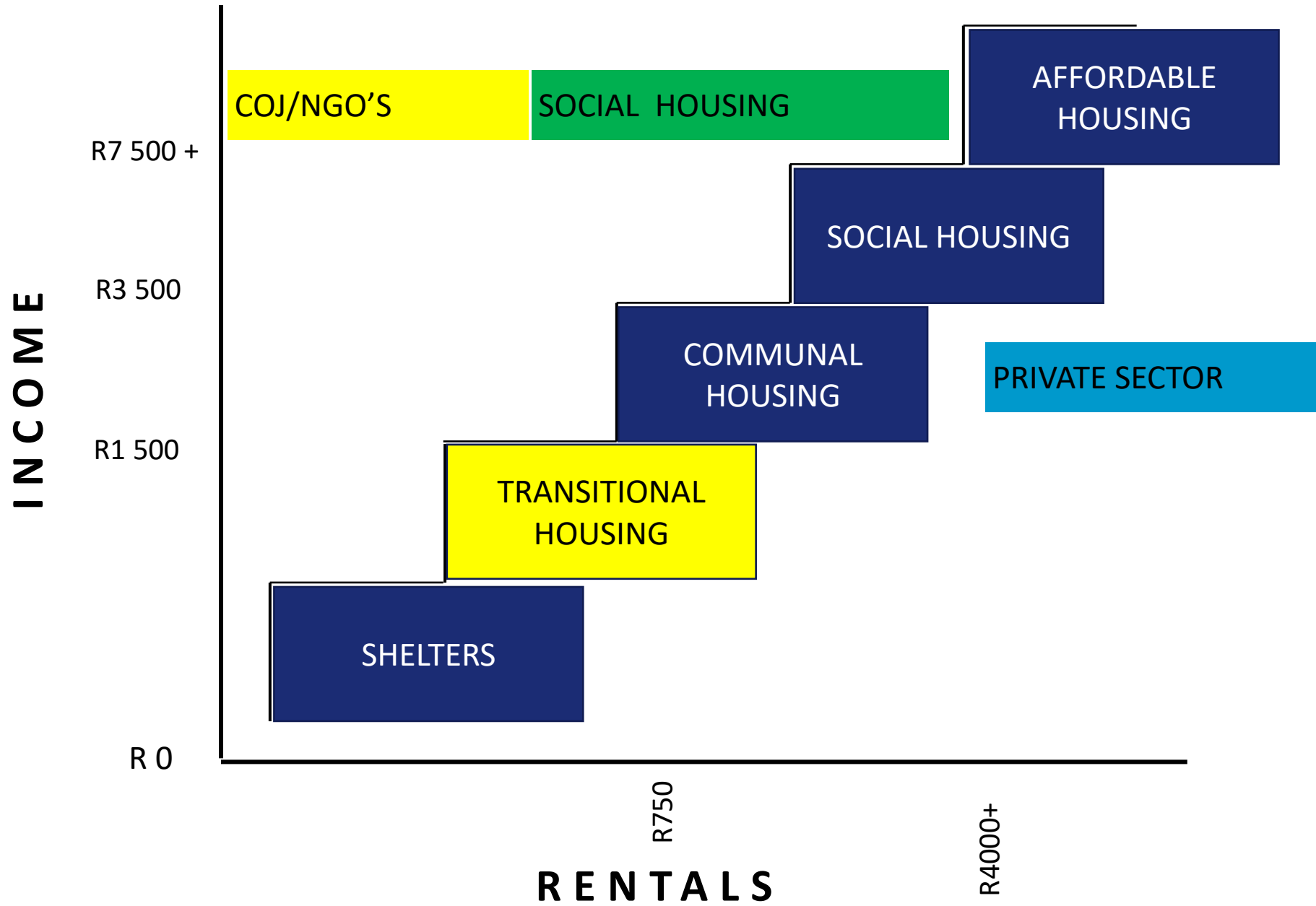


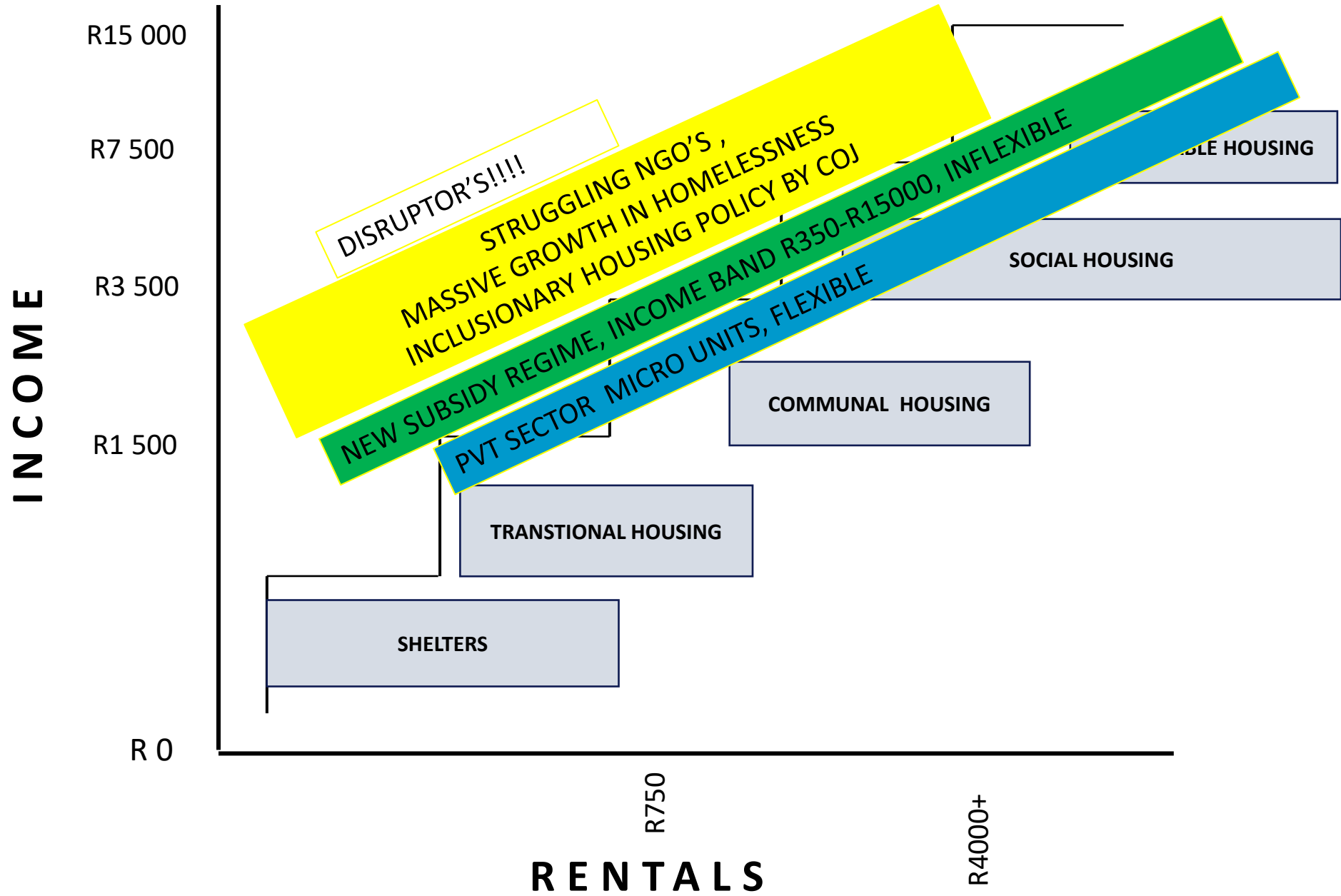
Presentation to GPMA on 4th October 2022

“Looking for solutions to address Homelessness in the Inner-City and the suburbs of Johannesburg”



- My journey started in 1994 on the streets of Rosebank
- I ran the JTH from 1998 to 2005
- The JHN pioneered the simple concept of creating a Housing Ladder/Continuum.
- In 2018, we started the JHN.
- Jointly with JICP and COJSD, launched the JHTT in 2020
- JHTT has been a platform to share ideas and to develop policy.







JHN LAUNCH ON 10-10-2018





STRATEGIC GOALS DEVELOPED BY THE 2019 STEERING COMMITTEE

A – Changing the hearts and minds of Joburgers towards the homeless

B – Develop a pilot Inclusionary Neighbourhood

C – Develop several multi-purpose shelters within the next 5 years

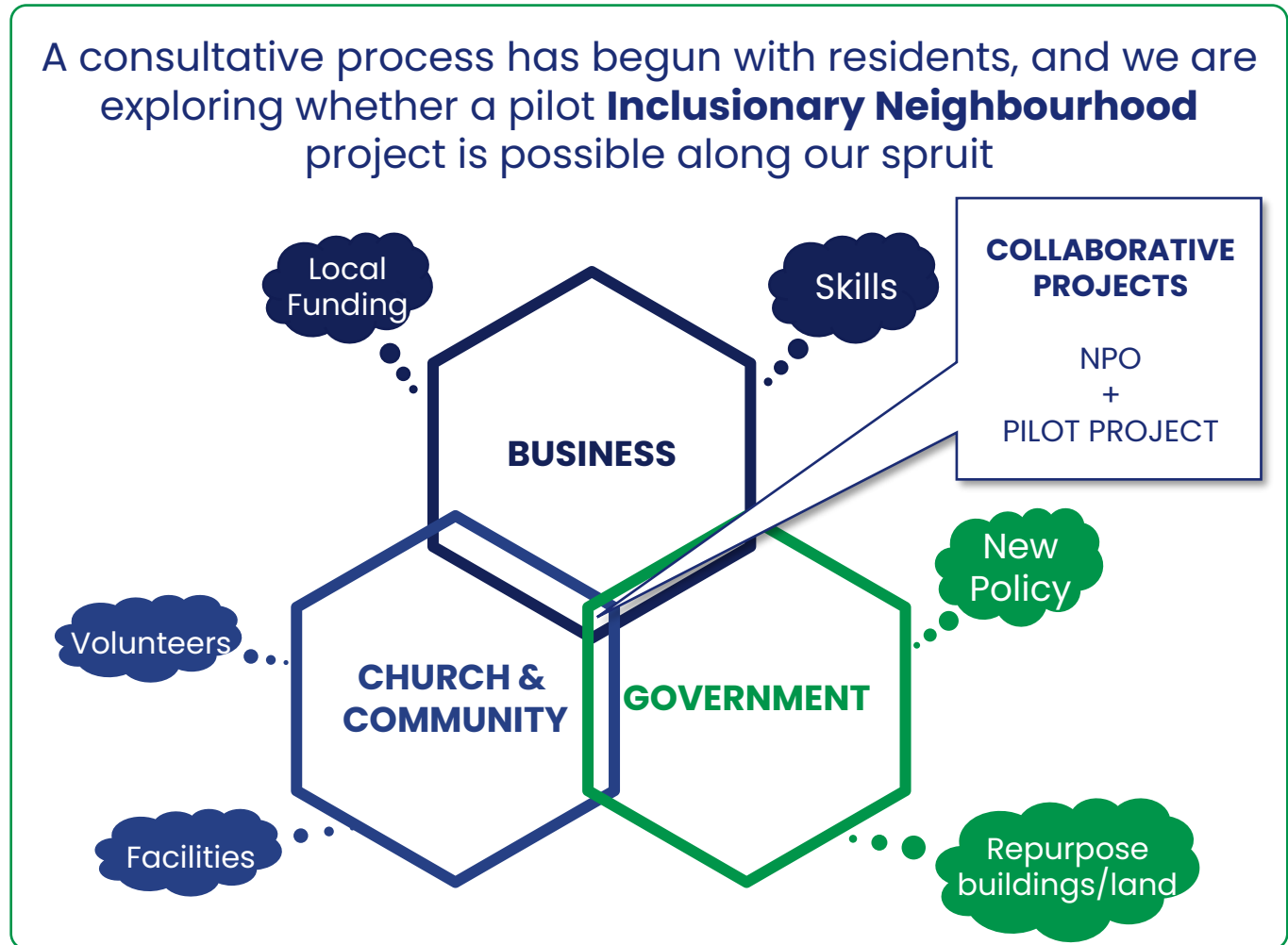
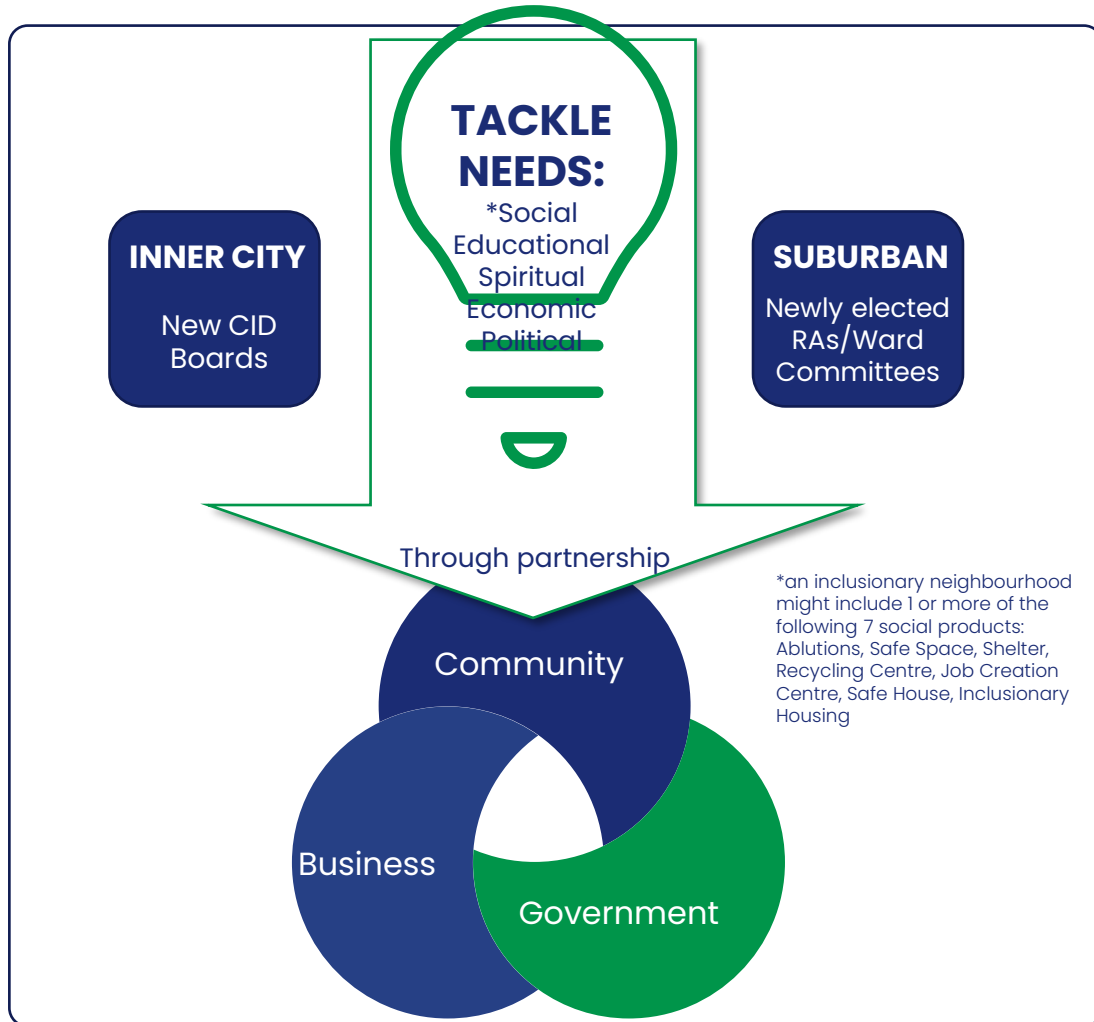
D – A true partnership with the COJ– **JHTT from 04/20**

E – Develop world class IT with M&E capability

What could be done with true collaboration galvanised around another simple concept?

“An Inclusionary Neighbourhood in every Suburb and CID in Joburg”

Definition: A neighbourhood that has developed its own integrated strategic plan by a group of local citizen leaders Who represent the spiritual, educational, economic, political and social needs of the community.





Benefits of an inclusionary Neighbourhood

- The community has seen the need to collaborate to address some of its social issues
- We collaborate with Churches, the community, business and government
- The local community finds solutions to its own problems
- We see the value of upskilling the unemployed, rehabilitating the homeless but understand it's a medium term not short term intervention.
- Developmental/Preventative approach vs Punitive approach.
- **Blah, blah, blah...but what products and services could we offer to resolve Homelessness?**



Drop-In Centres

- Drop-in Centres do a daily program, helping the Homeless rehabilitate between 6-24 months. The Drop-in-Centre is the daily programme designed to provide a pathway out of homelessness providing tools to both individuals and communities
- 4 phases:
 1. Preparation
 2. Rehabilitation
 3. Work readiness eg U-Turn Charity shops
 4. Employment
- JHN has pioneered the first Joburg one in Alberts Farm.
- MES has a proposal for a Drop-in Centre at Public Bath in Hillbrow.



U-Turn Charity Shop in Cape-Town





Drop-in Centre Budget

- U-turn has several drop-in/service centres in CapeTown. They have begun to collaborate with MES and are keen to establish drop-in Centres in Johannesburg.
- Their model includes working with churches and the community where they help upgrade soup kitchens into fully fledged service centres
- U-turn have created a chain of retail stores which not only provide job opportunities but are sustainable.
Melville Charity Store starts on 1 November 2022.
- U-turn use both OT's and SW.
- Opex in Cape-town for a typical "light" drop-in centre is R30K/month. This includes professional OT Worker/s.



Safe Spaces





Safe Space Principles

- The Safe-Space provide over-night accommodation.
- It can be a renovated building or 3 containers and an awning
- Best-practice is to link this to an existing NGO programme with existing governance. Eg. MES run one in Bellville, Cape-Town
- **Must be done in partnership with the surrounding community**
- In Cape-town, JOC established and have access to security, SAPS, Ambulances. In Joburg, we establish Area Committees.
- Expect bad behaviour but don't condone it.
- Social workers are essential



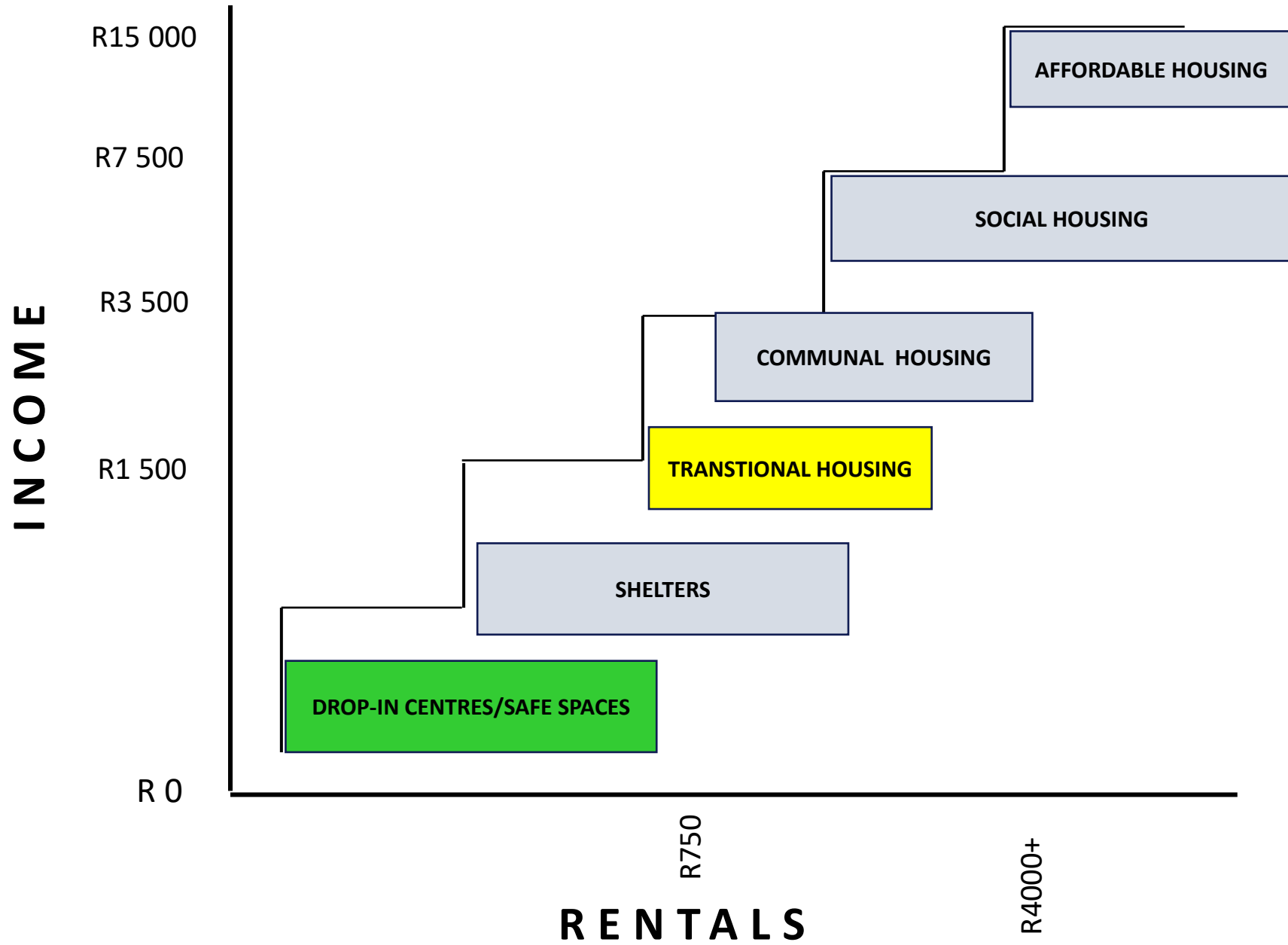
Safe Space Budget

- Capex dependent on site. R500K–R2M. Containers may require compacting which is expensive. JPC has properties around the City that are unused and could be rented.
- Opex in Cape-town for Safe Space for 64 people is R70K/month. This includes professional Social Workers.
- Funding from many sources to make this viable.



Strat Plan

1. For starters one needs a strong Church/NPO/NGO project in your community.
2. Create our own JOC/Area Committee. Every partner knows their role.
3. Find the right NGO's with the experience and expertise
eg; JHN/MES/U-TURN
4. Start a "lite" Drop-in Centre.
5. Find a site for a Safe Space close to a drop-in Centre.
6. Funding using multiple fund-raising strategies
eg; "Massive Small" strategy, U-TURN/CHURCH, funding via Ward IDP, funding from GDSD, Cid Levies, Vouchers.



TO CONCLUDE;



- We have come a long way since 2018.
- We now have good strategies to reduce Homelessness and have established NGO's ready to roll.
- Pilot projects exist in Joburg.
- We need Opex and Capex funding. GDSD and COJ Policies are in the pipe-line and we are hopeful of funding from both the GDSD and COJSD.
- JICP-SEF project.
- The Housing ladder concept has expanded.
- We want to develop pilot drop-in-centres within Joburg CID'S.

National Homelessness Conversation

3rd-4th November 2022

